

shepherds
A better home
moving experience



15 Clyde Terrace

Hertford, SG13 7JP

Guide Price £435,000



15 Clyde Terrace

Hertford, SG13 7JP

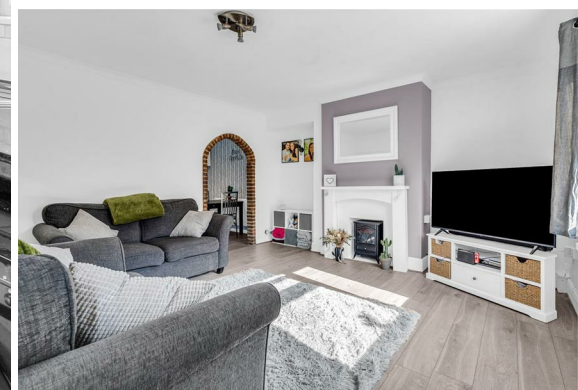
This well-presented 3-bedroom terraced house offers spacious living in a highly sought-after location, just a short walk from Hertford town centre and Hertford East Station.

The downstairs comprises a large living room featuring a traditional fireplace, creating a warm and inviting atmosphere. Leading through, the open-plan kitchen and dining area provides a modern and sociable space, perfect for both everyday living and entertaining.

The property boasts a generously sized garden, with both a patio and decking area at the rear, ideal for outdoor dining and relaxation. A newly laid driveway offers convenient off-street parking to the front of the property.

Upstairs, you'll find three well-proportioned bedrooms and a family bathroom, providing comfortable accommodation for families or professionals alike.

This home offers an excellent blend of character, space, and modern living, all within easy reach of local amenities and transport links.

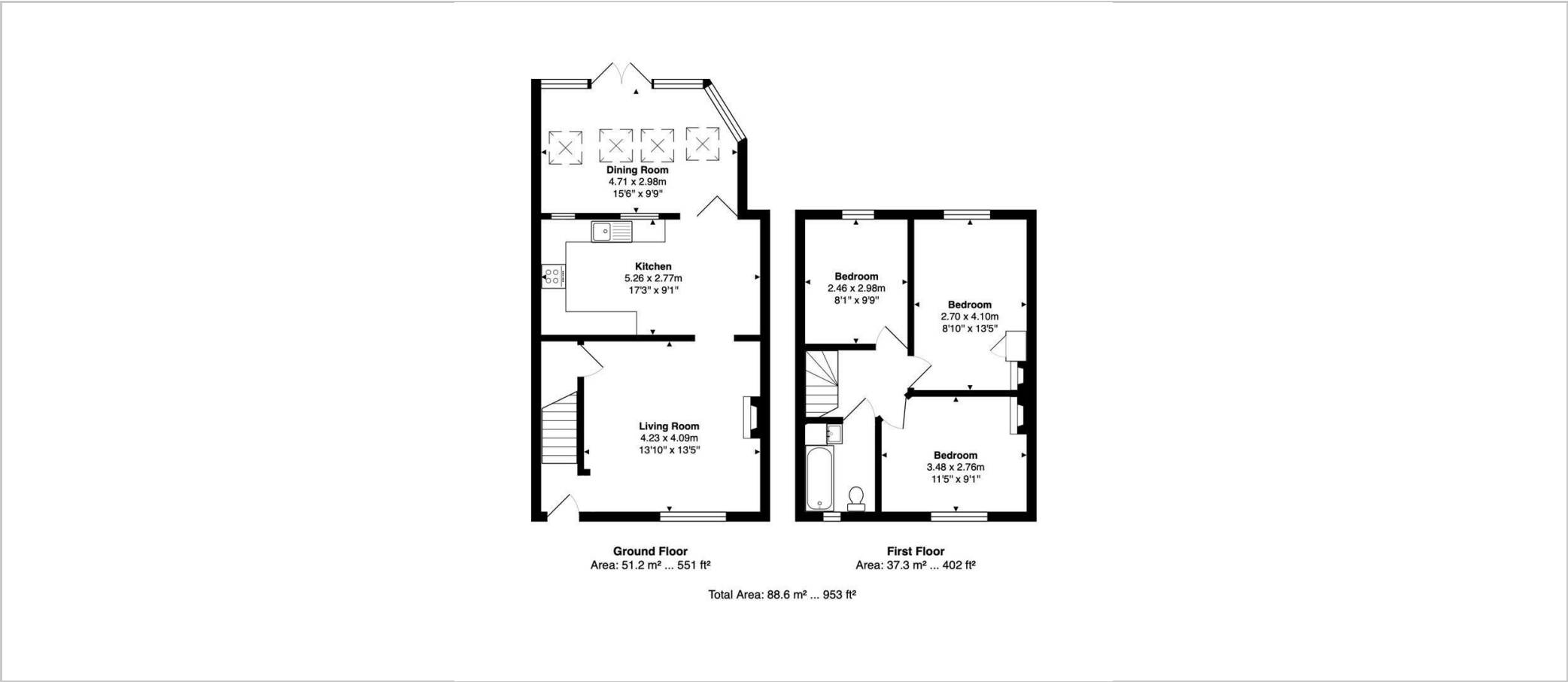




- Spacious 3-bedroom terraced house in a popular Hertford location
- Large living room with a traditional fireplace for a cozy ambiance
- Open-plan kitchen and dining area, perfect for modern family living
- Generously sized garden with both patio and decking areas for outdoor entertaining
- Newly laid driveway offering convenient off-street parking
- Three well-proportioned bedrooms providing comfortable living spaces
- Family bathroom with modern fixtures
- Short walk to Hertford town centre, offering shops, cafes, and amenities
- Close to Hertford East Station for easy access to London and beyond
- Ideal for families or professionals seeking a blend of space, style, and convenience



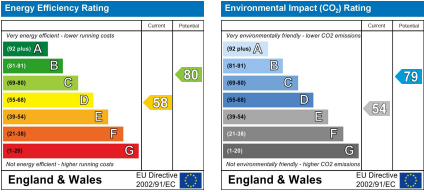
Floor Plan



Viewing

Please contact Shepherds of Hertford on 01992 551955 if you wish to arrange a viewing appointment for this property or require further information.

Energy Performance Graph



These particulars, whilst believed to be accurate are set out as a general outline only for guidance and do not constitute any part of an offer or contract. Intending purchasers should not rely on them as statements of representation of fact, but must satisfy themselves by inspection or otherwise as to their accuracy. No person in this firms employment has the authority to make or give any representation or warranty in respect of the property.

Riverside House, 6 Millbridge, Hertford, SG14 1PY
Tel: 01992 551955 Email: enquiries@shepherdsofhertford.co.uk